

We sent our intrepid reporter down the street to talk to the shopkeepers, residents, baristas, bartenders and visitors who all make Redchurch Street the vibrant community it is today.

For this issue, we asked: **If you could change something about Redchurch Street, what would it be?**

More bike parking. The pavements are narrow anyway and when you get a couple of bikes on each lamppost it's impossible not to walk in the road.

A flower shop - that's the only thing that's missing!

It would be really cool if the street was pedestrianized so it was more sociable, with a retractable roof so the weather didn't matter. Does this have to be sensible?

I like that there are a mix of shops now, not just big-name fashion brands I can't afford. So yeah, more of that.

Something needs to be done about the rubbish - more frequent collections or more bins. There always seems to be piles of rubbish bags everywhere and the bins are always overflowing.

More places to sit. When I buy a sandwich there isn't anywhere to sit and eat it.

Wider pavements, or ideally just no cars. It's not very relaxing walking down the street when you're having to step into the road to pass people.

It doesn't really feel like a community here, maybe it's because everything changes all the time. It's all pop-ups, nothing seems to last very long.



Ramadan Mubarak from onRedchurch

Neighbourhood Wellness Weekend

Local wellness businesses will come together on 23 and 24 April to offer your mind and body a spring awakening.

Start the weekend energised with an early bird yoga session at London Shuffle Club. On Saturday morning, Sweaty Betty's own yoga instructor will be on hand to guide you through your poses.

If a heart pumping spin class is more your speed, our friends at Psyche have you covered. Take part in a free class on Saturday afternoon led by Rita, one of the fitness company's favourite instructors.

Psyche believes that, "the bike, the beat, and the instructor are a unique combination - together they push you, ignite you and free your mind like nothing else can. Ride immerses you in the energy of the room to bring you an unrivalled mind-body experience suitable for all fitness levels."

Wellness experts will also be on hand to provide information on sleep, mindfulness and more.

Intended for all abilities and open to everyone in the neighbourhood, classes are free but places limited.

To avoid disappointment book online now: www.onredchurch.com/wwbooking or scan the QR code below.



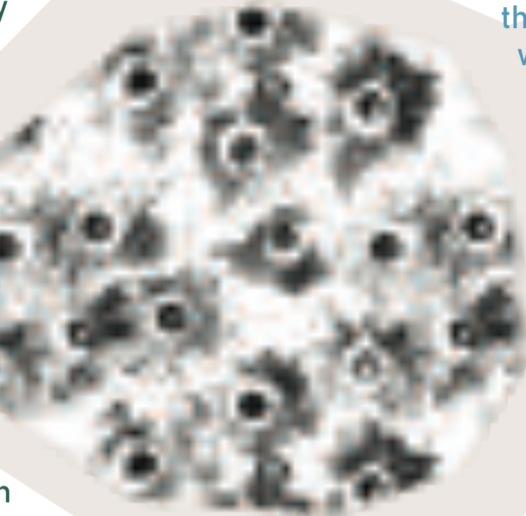
Cockney is dead, long live Cockney

Every so often a new piece of research emerges, lamenting the decline of Cockney. But is that really the case? Cockney Cultures, a new initiative by Grow Social Capital and the Bengali East End Heritage Society, think we should hold off planning any memorials just yet.

The Cockney identity was forged in East London's centuries-old, emergent working-class culture and flourished amid a need for support in an environment of social inequality and adversity. Although the Shoreditch of today seems worlds away from that nostalgic view, there is no doubt we're still a proud melting pot of new and different cultures.

Furthermore, the very spirit of Cockney is still very much alive and kicking, expressed through demonstrations and protests against threats to our community. This is what makes it so crucial that organisations such as Cockney Cultures exist.

They are working hard to create a platform of activities and events that prompt new dialogue and engagement. Conversations so far have covered such wide-ranging topics as: what Cockney revivalists learn from the Sylheti-Bengali Language Movement; through to what exactly defines a 'Cockney sense of humour'; and whether there is prejudice against regional accents and identity.



An innovative and pioneering project, 'Cockney Cultures', has been created to overcome bias, prejudice and ignorance against the Cockney identity.

Cockney Cultures is working to encourage greater self-belief, confidence, and pride in who Cockneys are, what they stand for, and how they can best work together to face their common future.

To get involved, visit <https://growsocialcapital.org.uk/campaigns/cockney-conversations/>

'London' image taken from a Sylheti writing workshop, courtesy of Saif Osmani

'Mind blowing decisions causes head on collisions'

sang the late 70's band, Heatwave. A tune that resonates with long-time Tower Hamlets' resident Henrietta Cyrille.

Henrietta is founder of The Power of Talk: 'I help people problem-solve', she explains. 'I'm a decision coach. I listen to people. Give them alternatives.'

Henrietta is 'a baby' of Tower Hamlets, as she puts it. Born local, Henrietta went to school in Bethnal Green, lives in Mile End and taught for over 20 years in East London colleges. She knows Redchurch Street fairly well.

'I'll be direct with you, if that's OK. It's almost like a distant world. I find it quite cold. As a child, I remember it being busy. I wish it had some colour and warmth. More of an identity closer to the culture of local people.'

Henrietta thinks that the issue isn't gentrification or change in itself, but the way in which change is handled.

'One thing you can't stop is change. But my concern is when Government and business come into an area with an agenda. When they don't want to listen. You find that they do stuff that is nice but often copied from somewhere else. What matters is to adopt a character that's vibrant, different and keeps some of the original features of a place.'

Listening is important to Henrietta in so many ways. As a teacher in Newham and Westminster FE and sixth form colleges, she saw that young people need to talk, to help them make their way in life. And listening is essential to her work as a coach. 'I'm different from a standard coach', she says. 'I don't seek to discover clients' goals and then work backwards. I want to support them to make decisions themselves.'

Recent clients include an entrepreneur looking to progress her business and a woman who wanted help to organise her wardrobe: 'She'd bought six different black dresses and during lockdown needed to decide which ones to get rid of. Question 1 was: how many black dresses do you need?'

A member of the East End Trades Guild, you can contact Henrietta via her website: <https://www.thepoweroftalk.com/>.

Pictured left: Henrietta and members of the East End Trades Guild

Hi there and welcome to Spring onRedchurch, the very first newsletter of our Community Interest Company.

onRedchurch CIC seeks a new vision for Redchurch Street, Shoreditch. Co-funded by a local resident, initially financed by landowners and supported by many businesses, onRedchurch is now supported by both Tower Hamlets and Hackney, and the London Mayor. We want to develop the character of the street in a creative, inclusive and popular way. That means listening to all our neighbours and acting upon their views.

We hope you enjoy this newsletter. Here you'll find profiles and interviews with people who live and work on Redchurch Street and the surrounding neighbourhood. There's art, opinion, information and entertainment. Want to know more about us? Share your views? Write a piece for the next newsletter?

We'd love to hear from you: lee@onredchurch.com

Spring on Redchurch

Numbi Fest - Numbi Arts annual celebration of Somali peoples and culture with Spoken Word, Music, Dance and Film. Featuring Somali Film Symposium alongside a stellar line up of Numbi resident Artists and special guests.

This year focuses on film and Somali Cinema as we celebrate visual culture and the many forms of storytelling as fertile ground for growth and community. Check out their work at Rich Mix 26 June Numbi Festival 2022 Launch - Barbaarinta- All Flourishing is Mutual Time 6pm til late: Tickets @ Rich Mix website and box office.

Zine design and artwork by Numbi Arts. Numbi Arts is a non-profit organisation based in Bethnal Green London that creates cross-art projects and works collaboratively with artists, educators and peer organisations, providing a range of inspiring opportunities for communities to engage with local/global art for change, contemporary arts and heritage. Somali-originated African-centred, with globally inclusive programming and outlook.

Numbi.org | @numbiarts (Facebook) | @numbiarts (Twitter) | @numbiarts (Instagram)



Spring onRedchurch was produced by onRedchurch CIC in collaboration with Numbi Arts



MAYOR OF LONDON



